

# Reunion Announcement

## THE COLEMAN-FEASTER-MOBLEY FAMILY ASSOCIATION

1926 Old Blair Rd Blair South Carolina 29015

September 6, 2013

### 73rd Annual C-F-M Reunion

REUNION DATE FOR THE 73rd ANNUAL COLEMAN - FEASTER - MOBLEY FAMILY REUNION IS SATURDAY AND SUNDAY, OCTOBER 5-6, 2013.

### PLAN NOW TO ATTEND.

Feasterville has a rich history – and nearby are other sites that are part of our C-F-M family history. On Saturday, October 5, canoe the Broad River, or take your own driving tour of the Feasterville, Shelton, Blair, and Salem Cross Roads areas.

**CAMPER HOOK UP AVAILABLE.** As well as room on the grounds for setting up tents.

**GENEALOGY DISPLAYS AND C-F-M EXHIBITS.** The School House and the Boarding House will both have exhibits and displays of historical and genealogical interest.

**REGISTRATION.** All registration is done on the day of the Reunion. No advance registration is required.

For a tax-deductible contribution to the C-F-M Family Association for upkeep of the historic buildings and grounds, send your check to: Teddi M. Miles, Treasurer, 167 Rutledge Rd, Greenwood SC 29649-8992.

### EVENT SCHEDULE

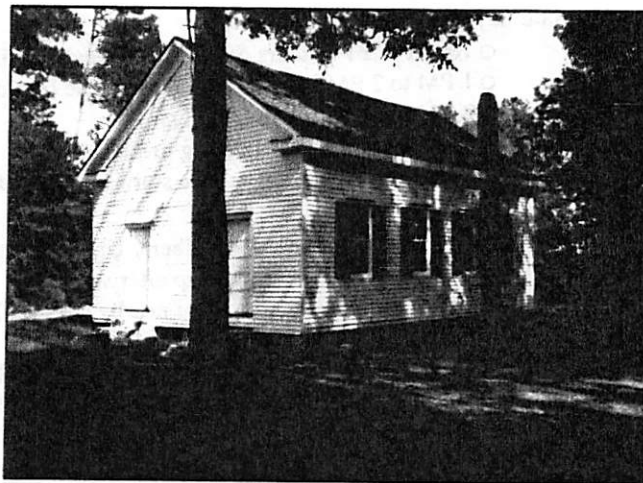
**11:00 a.m.** Worship service at Liberty Universalist Church.

**11:40 a.m.** Official Annual Business Meeting at Liberty Universalist Church.

**12:30 a.m.** Picnic on the grounds of the Feasterville Boarding House.

**LOCATION:** Liberty Universalist Church and the Feasterville Boarding House are located approx. 40 miles north of Columbia on SC Hwy 215. If approaching Columbia on I-20, turn north at the Monticello Road exit. Proceed on Hwy 215 for about 35 miles, passing through Jenkinsville, Monticello, and Salem Crossroads. There is an historical marker on the right side of the road, just at the entrance to the grounds.

**CONTACT US FOR MORE INFO:** For information, write or call Ron Feaster, President, 560 Coldstream Dr, Columbia SC 29212, (803) 781-2587.





*Ivy Hall, built by Arromanus Lyles before 1800*

**LYLES / LILES / LISLE / LYLE  
FAMILY REUNION  
OCTOBER 11-13, 2013  
FEASTERVILLE FEMALE INSTITUTE BOARDING HOUSE  
FAIRFIELD COUNTY, SOUTH CAROLINA**

Please join us for the reunion of the descendants of this family. Documentation says that the Lisle family was in Virginia by 1626, having come here from England. This family lived in the Tidewater area of the Colony of Virginia in the 1600's and early 1700's among other families of English origin. The earliest documented Virginia ancestor was John Liles of Henrico County. By the 1730s most members of this family had migrated just across the Virginia line into the Province of North Carolina, eventually spreading into Anson and Rutherford Counties (N. C.) and in the S. C. upcountry in counties around Lyles Ford on the Broad River. Surrounding counties are Newberry, Fairfield, Chester, Union and Spartanburg Counties.

The reunion site near Lyles Ford, the Feasterville Female Academy Boarding House, is a National Historic Registry site (ca.1840) that was established as a school by John Feaster for the daughters of the Broad River basin plantations. Members of our family attended and taught there, and the idyllic setting of the restored old school is beautifully set up for family reunions, lovingly restored by the Coleman-Feaster-Mobley Family Association. The Association has held annual reunions on this site since the early 20<sup>th</sup> Century, and we Lyleses started a biennial tradition back in the 1980s. There are several connections to the other families, but specifically, John Feaster Lyles and his cousin/wife Carrie E. Lyles lived and taught at the Feasterville School in the 1880s. Our reunion has seen great success in the past, and this year's event promises to be even better!

Some favorite features of the reunion will be touring the houses of Major Thomas Lyles, called the Oaks or Buckhead, and the house built by Arromanus Liles between 1790 and 1810, called Ivy Hall. Weather permitting, we will trek down to the Beaver Creek setting of the old Lyles cemetery, marked only by fieldstones, the nearby ruins of Arromanus Liles's canal and trading post, Lyles Ford, and many other cemeteries and sites from our local Lyles history. The Lyles Ford road was an original branch of the Great Philadelphia Wagon Road and remains of it are still visible. Col. John Lyles ran a ferry service there from the Newberry side of the river.



*The Oaks. Built around 1820 by Maj. Thos. Lyles*

***Tentative daily plan:***

- Friday, Oct. 11, 1 PM: (please eat before arriving) tours of outlying areas of Union, Fairfield, Chester, and Newberry Counties. Call Pelham at 803-727-5908, or Susan at 803-351-0265 to locate the group if you are late.
- Friday evening, 7 PM: Dutch supper at the Fairfield Cove Seafood and Family Restaurant, 1418 US Hwy 321 S, Winnsboro (803-815-1156).
- Saturday, Oct. 12:
  - 10AM to 1 PM tours of Lyles Ford and Fairfield County sites
  - 1 PM to 2 PM bag lunch at Feasterville Boarding House.
  - 2 PM to 6 PM continued tours.
  - 6:30 barbecue served during presentations
  - 8 PM to whenever: campfire stories, music, and camaraderie
- Sunday, Oct. 13:
  - 10 AM Church service at Liberty Universalist Church across the road. Organizational meeting included.
  - 11 AM Brunch with cleanup afterwards
  - 1 PM Optional, short tour of nearby sites for hangers on.

We will have a scanner available to copy items to your thumb drives during the day on Saturday. Bring documents to share with others. We would like to have researching members from family lines to present to the group on Saturday evening. Please volunteer for this (contact Pelham at [fairfieldmus@truvista.net](mailto:fairfieldmus@truvista.net)). In addition, we are asking some of our musical and storytelling family members to consider performing around the campfire on Saturday night. Please contact one of us if you would like to present or perform. Bill Liles of Houston at [liles22@comcast.net](mailto:liles22@comcast.net) is the administrator of the family project at Family Tree DNA in Houston ([www.familytreedna.com](http://www.familytreedna.com)). Please contact him for more information.